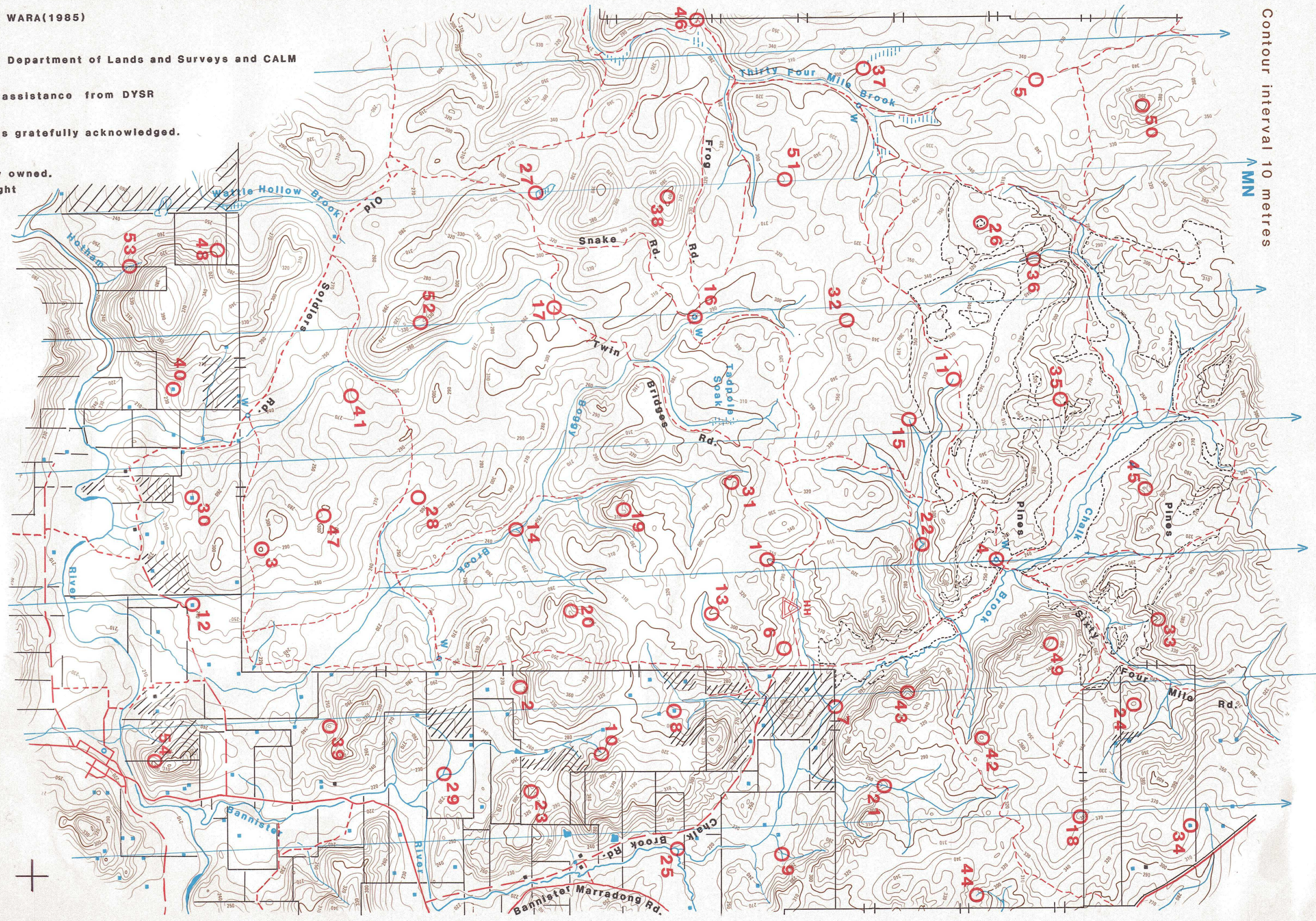


WESTERN AUSTRALIAN ROGAINING ASSOCIATION
(24 HOUR CROSS COUNTRY NAVIGATION)

TADPOLE SOAK

Sept 1985 Rogaining Championships

Contour interval 10 metres
MN



LEGEND

- Road ———
- Track - - - - -
- Control ○
- Hash House △
- Watercourse ———
- Water Drop W
- Swamp
- Out of Bounds
- Homestead
- Bunnings Forest Boundary
- Edge of Pine Forest

Course Setters: Jim Campbell
Dave Muir
Course vetter: Marcia Millard

Prepared by J.Campbell and M.Millard for WARA(1985)
Based on maps and aerial photographs by Department of Lands and Surveys and CALM
Printing by Vanguard Press with financial assistance from DYSR
Assistance from Mike Cottier (Bunnings) is gratefully acknowledged.
The area covered by this map is privately owned.
Access except at this event must be sought from individual landowners.

TADPOLE SOAK CONTROL LIST

NUMBER	FEATURE	DESCRIPTION	POINTS
1	The watercourse	Head of	20
2	A knoll	W. side	20
3	The knoll	Top of	20
4	Man made	Inside	20
5	MWB sign	100m @ 060	20
6	A large clearing	W. edge	20
7	The fence/stream junction	near rocky outcrop	30
8	The dam	Northern, 30m @ 180	30
9	The stream junction		30
10	A gully junction		30
11	A vegetation boundary	N. side	30
12	The dam	150 m @ 310	30
13	A granite outcrop	W. side	40
14	The stream junction		40
15	The stream	Head of	40
16	Track junction (where snake meets frog)	100m @ 100	40
17	The track junction	80m @ 100	40
18	The ridge	Top of	40
19	The small gully	Head of	50
20	The broad spur	Top of	50
21	The rocky escarpment	Top of	50
22	A stream bend	Western, N. side	50
23	The gully		50
24	The rocky knoll	Top of	50
25	The river bend	N. bank	50
26	A granite outcrop		50
27	Marshy ground	S.W. corner	50
28	A small copse	nr. head of watercourse	50
29	The creek junction	70m @ 320	50
30	The dam	100m @ 160	50
31	A rocky outcrop	S. side of gully	60
32	A large clearing	S.W. edge	60
33	The gully junction		60
34	Fence	20m NE of dam	60
35	The saddle		60
36	A small cliff	Foot of	60
37	Marshy ground	S. edge	70
38	The summit	Near big old jarrah	70
39	The knoll	Top of	70
40	The dam	60m @ 105	70
41	The plateau	Where it narrows	70
42	The knoll	Top of	70
43	A rocky outcrop	Near top of spur	80
44	A conspicuous tree	At gully junction	80
45	The rocky knoll		80
46	The track junction	100m @ 180	80
47	The small valley	Head of	80
48	The saddle	E. side	80
49	The summit		100
50	The benchmark		100
51	The broad valley	In the middle	100
52	The saddle		100
53	The gully		100
54	Fence	On top of spur	100